



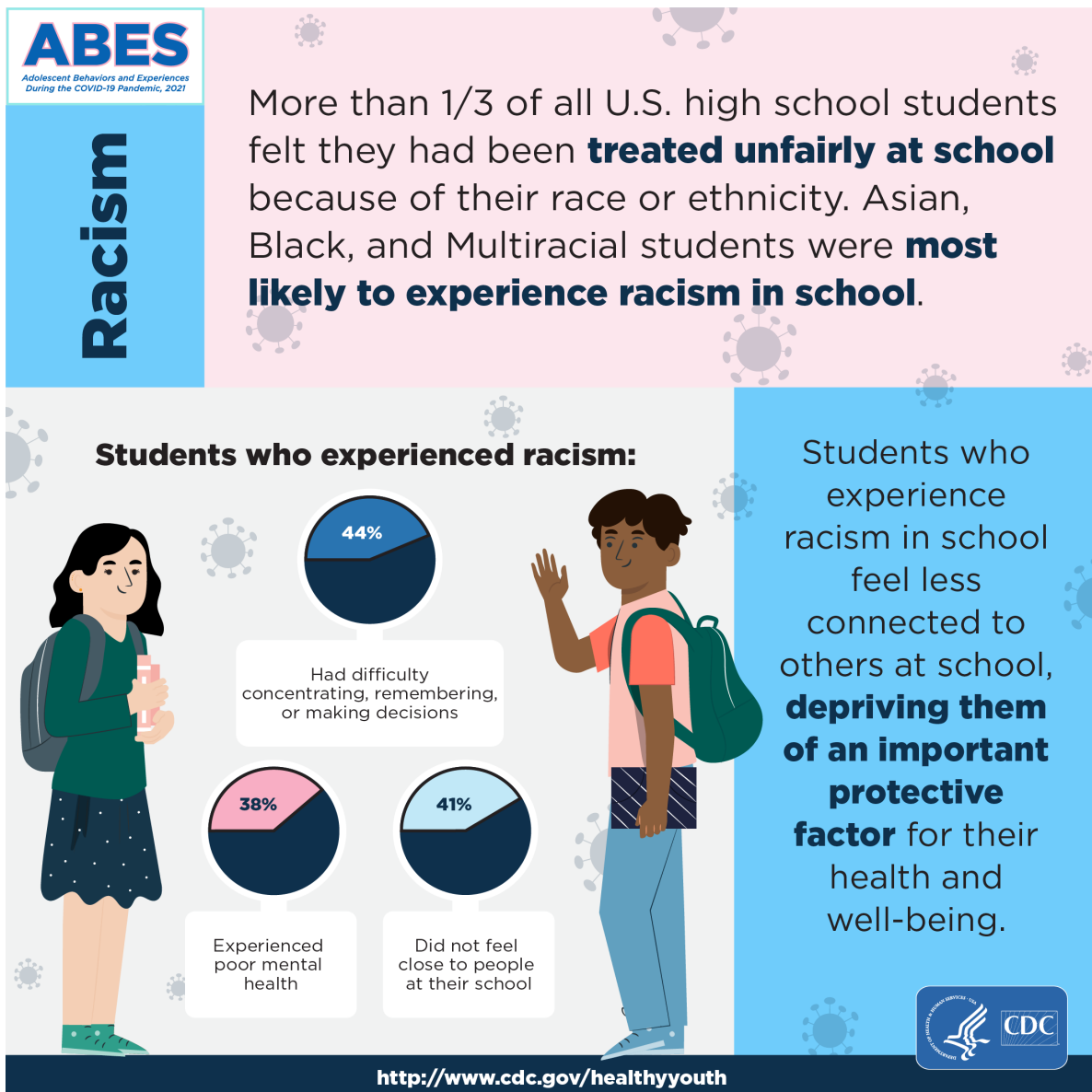
CLIMATE CONNECTION

Information and strategies
linking Climate and School Safety.

Anti-Racism Efforts in Schools

Climate Connection is a monthly publication of the NYS Center for School Safety.

In previous editions, we explored the relationship between mental health and social connectedness. In recognition of July as *Minority Mental Health Month*, we want to acknowledge the affects of racism on social-emotional outcomes for BIPOC youth. According to the Adolescent Behaviors and Experiences Survey from the CDC, racism negatively impacts mental health, connection to others at school and cognitive skills, such as concentration and decision-making (see infographic below). Schools have a role in helping to reduce racism through curriculum, policy and practice, and family and community engagement. Read on for more information and resources to support anti-racism efforts in schools.



Anti-Racism Efforts in Schools

Climate Connection is a monthly publication of the NYS Center for School Safety.



POLICY & PRACTICE

Two key areas for advancing equity and challenging racism in schools are **discipline and instructional practices**. In "[Strategies to Support Equitable School Discipline](#)", Hanover Research reviews best practices in school discipline, including Restorative Practices, SEL, Cultural Competence and PBIS. The USDE's "[Guiding Principles: A Resource Guide for Improving School Climate and Discipline](#)" provides specific action steps. In addition, the [Resilient Educator](#) offers strategies for inclusive and culturally responsive teaching, such as the integration of diverse perspectives in instructional practices. Visit our [school climate page](#) for more relationship building resources.



CURRICULUM

Transformative Social Emotional Learning emphasizes identity, agency and curiosity, and leverages the lived experiences of students to enhance social and emotional competencies that empower youth and adults to contribute to a just society. Visit [CASEL](#) to learn more.



When combined with **Service Learning**, Transformative SEL establishes context to help students and adults understand the diverse experiences of community members. Incorporating [Service Learning](#) projects into the curriculum, especially those that include activism, promote the development of social awareness and empathy, relationship-building, and civic engagement. [Learning to Give](#) and [Learning for Justice](#) provide lesson plans, project ideas and other resources for educators.

PARTNERSHIPS

Last month, the NYS Center for School Safety hosted "[Building Community Partnerships to Support School Safety and Climate](#)". The webinar focused on the importance of using data and collaborative strategies to create **family-school-community partnerships** that engage diverse perspectives. When intentionally facilitated with equity and inclusion in mind, the process leverages the voices of individuals and groups most affected by discrimination in communities and systems. Together these partnerships can provide meaningful change that supports wellness and safety for the whole community.

