



# Safe and Supportive Schools Technical Assistance Center

*promoting positive school climate in New York schools*

## Important Updates

### U.S. Department of Education Launches Best Practices Clearinghouse to Highlight Innovative Practices for Reopening Schools and Campuses

In the end of April, the U.S. Department of Education (ED) launched the Safer Schools and Campuses Best Practices Clearinghouse, drawing from practices and strategies utilized across the country. Topic areas include: (1) Safe and Healthy Environments, (2) Supports for Students, and (3) Teacher, Faculty, and Staff Well-Being; Professional Development; and Supports. Strategies are provided for K-12, early childhood, and higher education settings.

[View the Clearinghouse](#)

## Upcoming Events

### Join the Safe & Supportive Schools TAC for our next (and last!) Community of Restorative Practice, June 10th, 3-4pm

Each month, the Safe and Supportive Schools TAC and Lori DeCarlo, Superintendent of Randolph Academy, host a community of practice to exchange ideas and experiences around Restorative Practices. Each session includes a facilitated circle exploring major themes that are central to our work, including: building trust and community, establishing an RJ team, gaining buy-in and support, and guiding principles of Restorative Practices. Strategies and resources are shared to support implementation in your district or school.

[Register Here](#)



### About the Facilitator

Lori DeCarlo is the superintendent of the Randolph Academy, a public school which supports, empowers, and educates children with various social-emotional and mental health needs. She leads in Restorative Justice training initiatives statewide, serves on the Western NY Regional Youth Justice Team, partnering with Erie County's Commissioner of Probation and funded by NYS Criminal Justice Services, and has presented at dozens of conferences, including those of the National School Boards Association, NYS School Boards Association, and NYS Council of School Superintendents.

---

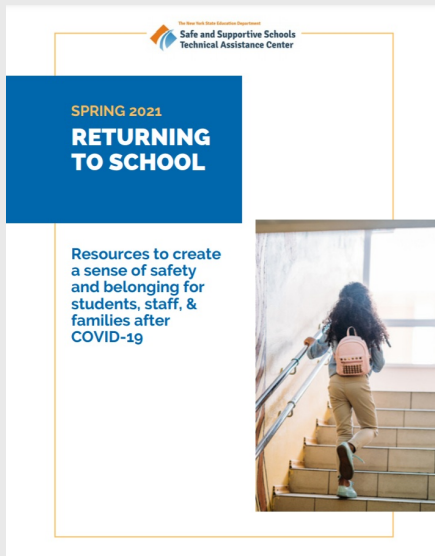
Keep an eye out for additional, upcoming virtual training sessions on **Developing High-Quality District-Wide and Building-Level Emergency Response Plans**, as well as recorded training sessions on the **Incident**



## Webinars from State and National Organizations

- The **Morningside Center for Teaching Social Responsibility** is hosting a webinar on June 9th at 7PM on SEL strategies for parents. [Learn more](#)
- The **NYS Youth Justice Institute** is hosting a series of three panel discussions from June 1-3 titled Beyond 2020: The Next Normal - COVID-19 and Youth. The series explores topics related to the impact of the pandemic, including education as a protective influence, court-based innovations, and trauma, healing and racial and ethnic disparities in child-serving systems. [Learn more](#)
- **Panorama** is hosting a FREE virtual summit "A Resilient Reopening" with a focus on centering equity and the whole child on July 29 from 11:30AM-5:00PM EST. [Learn more](#)

## Resource Spotlight



### Returning to School: Resources to create a sense of safety and belonging for students, staff, & families after COVID-19

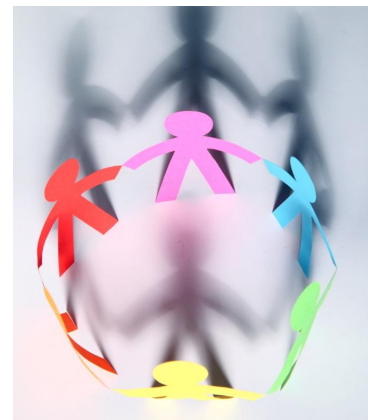
In this [guide](#), you'll find resources on topics related to school climate and safety when returning to in-person learning: social emotional learning, trauma-informed education, restorative practices, mitigation and safety planning.

Looking for a resource on a specific topic? [Reach out to our team](#) and we will connect you with web-based resources to support your program needs.

## Resources on Equity and Anti-Bias Tools and Strategies (WestEd)

WestEd has a curated set of resources from organizations such as CASEL, the Anti-Defamation League (ADL), COVID-19 Education Coalition Centering Equity, and the BELE Network on building equitable school environments, supporting and serving diverse learners, and exploring topics of bias and social justice.

[View the Resources](#)



**Trevor Project**

Training and resources to support LGBTQ+ youth in the classroom

**We R Native**

Resources curated and created by Native youth on cultural and social-emotional topics

**Work 2 Be Well**

Resources to navigate intergenerational trauma and student mental health

**BEAM**

Black Emotional and Mental Health Collective - Toolkit and Resources

Quick Reads



[Taking time to hear teachers' concerns crucial to encouraging, retaining them \(K12 Dive\)](#)



[Who Do You Call On? Rooting Out Implicit Bias \(Edutopia\)](#)



[Emotional Regulation Activities for Tweens and Teens \(Edutopia\)](#)



[Weaving Anti-Bias and Equity into Curricula Begins with Self-Reflection \(K12 Dive\)](#)

Visit Our Website

